




**BOYS & GIRLS CLUBS**  
OF THE GREATER SANTIAM  
*Serving Lebanon & Sweet Home*

The Boys & Girls Clubs of the Greater Santiam is dedicated to helping create an economically vibrant and prosperous community where all children thrive, growing to realize their full potential as productive, responsible and caring citizens.

We will succeed in this vision by fulfilling our mission to provide critical programs, services and opportunities designed to prepare any child for success—in school, work, post-secondary education, and life.



## **Boys & Girls Clubs of the Greater Santiam**



*Dedicated to a Vibrant  
Community Where All  
Children Thrive—  
Growing to Reach Their  
Full Potential*





## *Priority Scope of Service:*

### SCHOOL AGE CHILDREN

Afterschool and summer programs offer expanded learning opportunities that help children and teens gain new academic, social, and leadership skills. Decades of research shows that students from low income families have lower levels of academic achievement. This is attributed to a lack of access to afterschool and summer learning opportunities.

### POST-SECONDARY / WORKFORCE READINESS

A one-size fits all approach does not prepare youth for life after high school. Far too many students are graduating, or failing to graduate, with no real world experience and a lack of understanding about their future options. This can be addressed through partnership and sincere community based efforts.

### RECREATION

Communities that thrive offer a wide variety of recreational activities for young and old. Children who participate in athletics and other activities are more likely to stay on track academically, and avoid high risk activities. Families make decisions about relocation based on available activities.

### Spending Strategy

A. Total Return. Funds available for distribution will be determined by using a total return principle, i.e., return derived from dividends and interest as well as realized and unrealized capital gains.[i] The funds available for distribution during any one year will be limited to a percentage of the market value of the corpus that is based on a (3-year or 5-year) rolling average,[ii] with measures taken at the end of each of the preceding (12 or 20) quarters. The market value for this purpose will be taken net of the fees for investment management.

B. Any unexpended funds from those available for distribution in a given year will be accrued and will continue to be considered available for distribution in subsequent years unless otherwise designated by action of the Investment Committee with the approval of the (governing board). Expenses related to the management and administration of the FUND will be deducted from the funds available for distribution.

### C. Honoring Donor-Imposed Restrictions

In order to monitor ongoing adherence to donor-imposed restrictions, the BGCGS Board of Directors is to periodically review a report of endowment disbursements. This Policy recognizes that there may be cases where a restricted use becomes obsolete or overfulfilled, or becomes inconsistent with the BGCGS's needs or mission.

Note: A true endowment is established if a donor makes a gift and restricts it to an "Endowment" Fund, often defining its use. If the BGCGS's promotes its Endowment Fund and receives gifts of any size for the Fund, those funds are equally restricted. If a purpose is announced and donors give to an Endowment Fund for a named purpose, the funds are restricted as to purpose as well. If the BGCGS receives an unrestricted bequest that is placed in the Endowment Fund, or if the BGCGS Board of Directors decides to put excess funds into the Endowment, those funds remain unrestricted. This part of the Endowment Fund can be spent down by the (governing board) within the established distribution rules. This is considered a "quasi" or unrestricted endowment.

[i] A "total return" spending policy establishes value based on income, dividends, and capital appreciation (depreciation). An "income only" policy considers only the interest earned and dividends paid.

## Boys & Girls Clubs of the Greater Santiam Endowment Spending Policy

The purpose of this Policy is to set forth the principles and guidelines for spending the Boys & Girls Clubs of the Greater Santiam endowment and quasi-endowment fund(s) to achieve the following goals:

Safeguard the fund(s) for future generations

Enable the maximum amount of spending that can be maintained over the long term.

Ensure that Fund income is as stable and enduring as possible.

Ensure that the stated wishes of donors are honored.

### SPENDING OBJECTIVES

#### A. Generational Neutrality

The fund is considered to be permanent, and its benefit to future generations should be equal to its benefit to the current generation. The key is that the amount spent annually should remain as close to constant as possible, when measured over time on an inflation-adjusted (“real”) return basis. Investments and spending are to be coordinated in a manner so that the Fund’s income will maintain its real purchasing power into the future.

#### B. Maximum Sustainable Spending

Income from an endowment is to be utilized in compliance with policy. It is the BGCGS’s policy to use the earnings of the Operations Fund, on generation-neutral basis, to help meet the needs of the BGCGS and fulfill its mission.

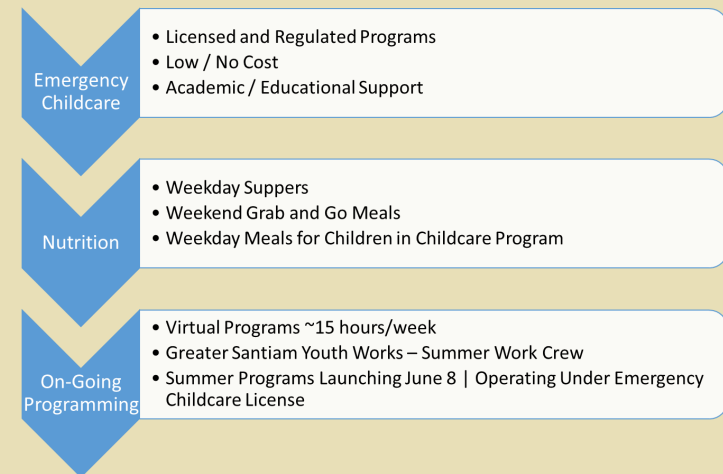
#### C. Minimize Volatility of Amount Available for Spending

Because many of the needs and uses of the Operations Fund’s income are recurring, or ongoing in nature, the Operations Fund asset management policies and spending strategy are structured in a way that attempts to minimize the year-to-year volatility of the amount available for spending.

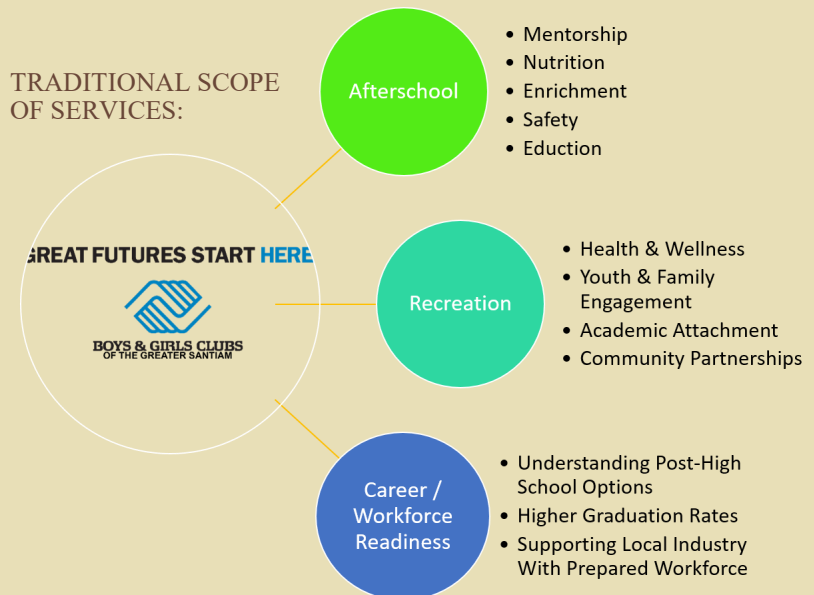
#### D. Donor-Imposed Restrictions

Those who manage and spend endowment funds exercise those duties in a special position of trust and responsibility, both to the beneficiaries and to the donors. When the BGCGS accepts endowment gifts that are restricted by the donor (either time restrictions or use restrictions), those restrictions will be honored to the extent permitted by law.

### CURRENT SERVICES DURING STATE OF EMERGENCY:

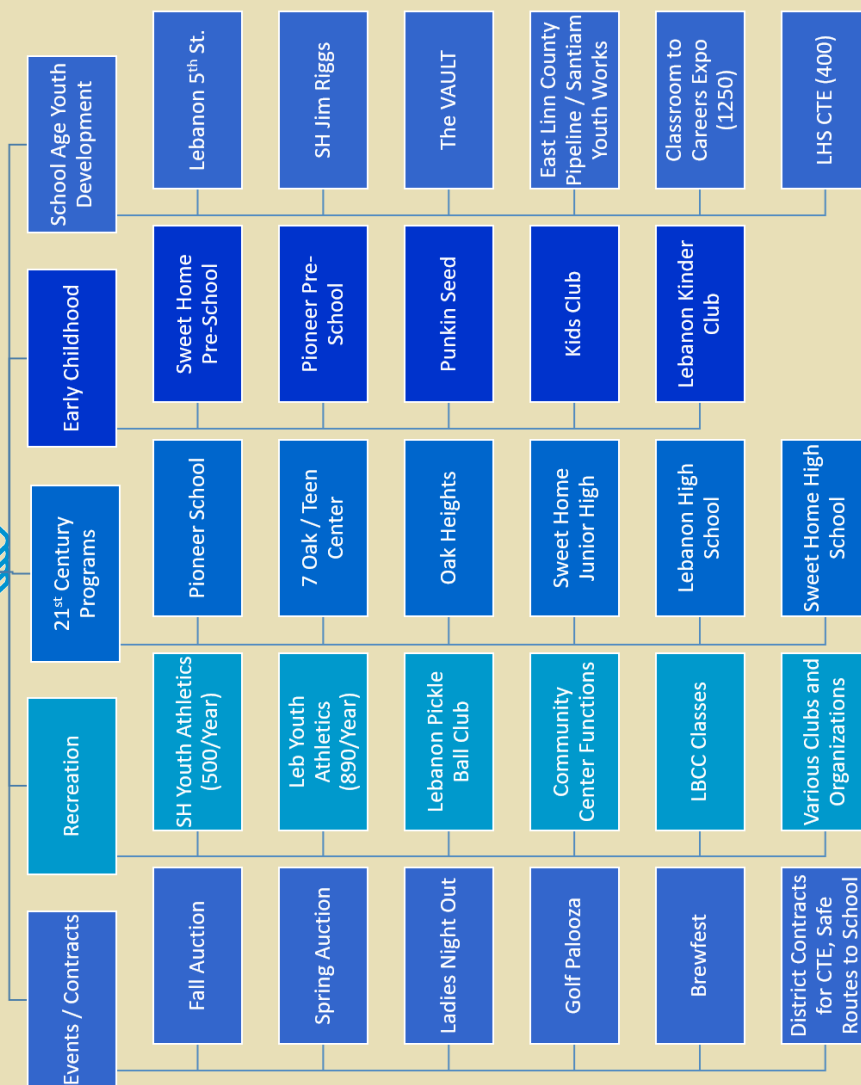


### TRADITIONAL SCOPE OF SERVICES:



An economically vibrant community where all children and families thrive.

*Pre-State of Emergency: This chart and the following pie chart illustrate each point of contact in East Linn County as well as participation.*



**In February, the BGCGS Board of Directors announced the 2020 campaign to fund the BGCGS's first endowment and challenge!**

An anonymous donor has offered a matching gift totaling \$400,000 to pay off the Club's debt (mortgage at 5th St. building) if \$400,000 is invested in the endowment between now and the end of 2020.

**You and others can help us meet this challenge AND ensure that services and programs remain available for future generations.\***

**Champion:** Speak with others about the significance of this opportunity for the long-term benefit of the organization and the community.

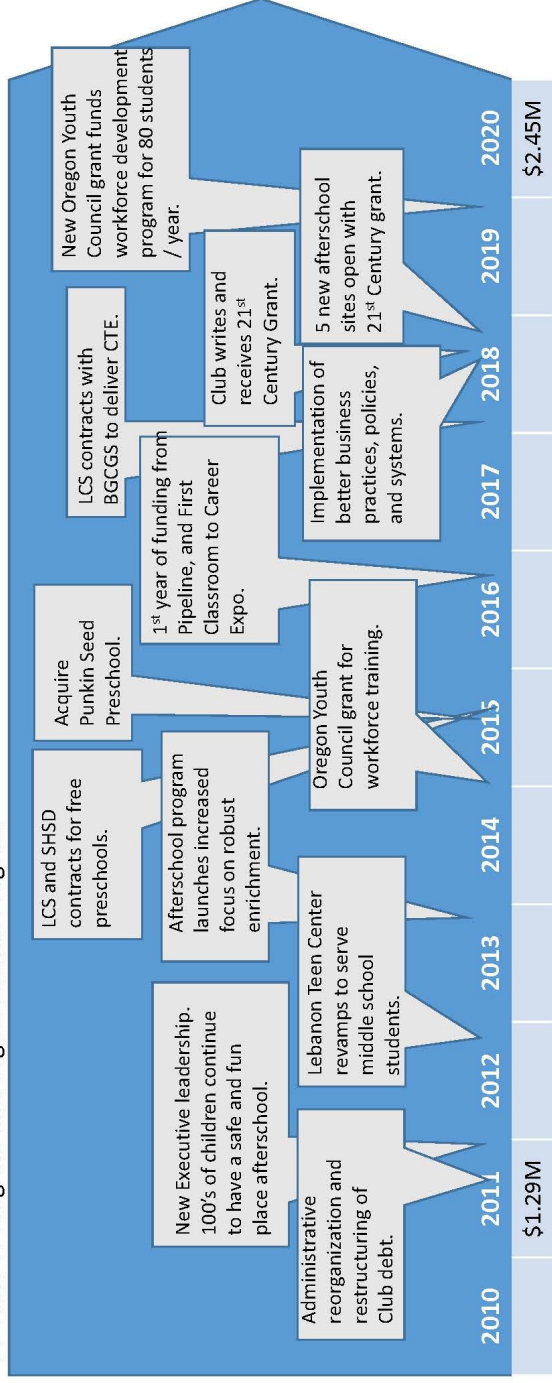
**Invite:** Invite others to participate as investors. Help us identify others who may be willing.

**Invest:** Leave a Legacy

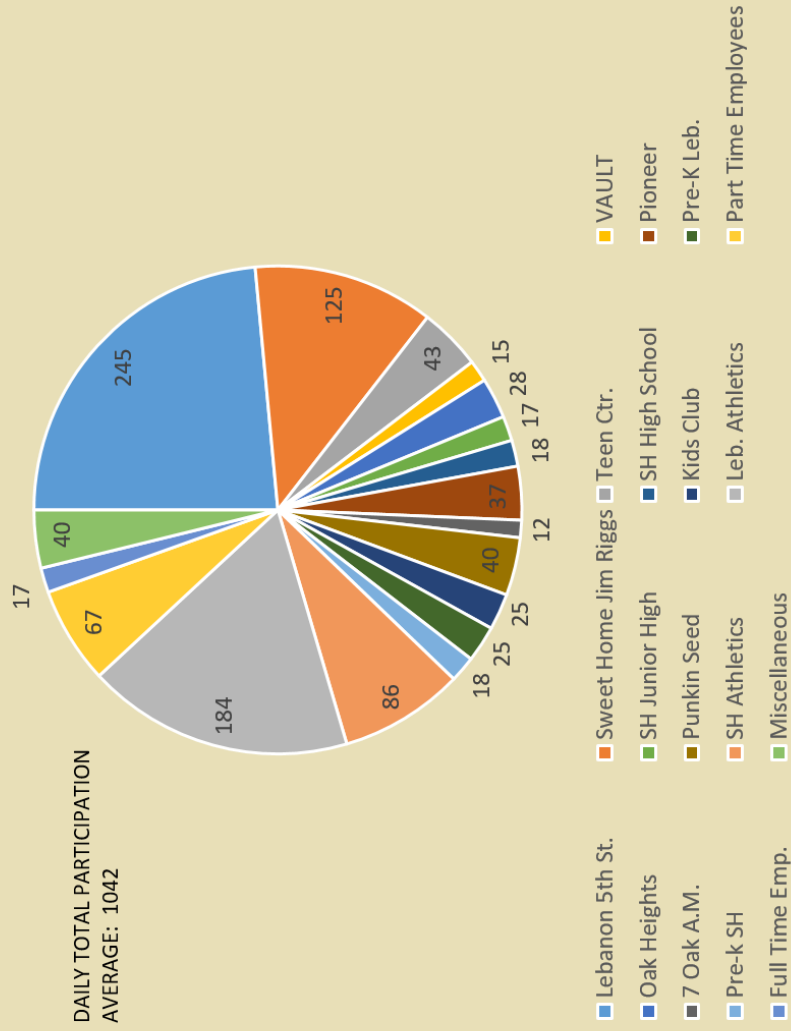
Please consider making an investment today. For more information contact Kris Latimer—Executive Director at 541.258.7105 or [kris@bgcgratersantiam.org](mailto:kris@bgcgratersantiam.org)

\*Funds invested in the endowment (principal) are maintained for growth—only a managed portion of income is spent. Spending policy is attached for your information.

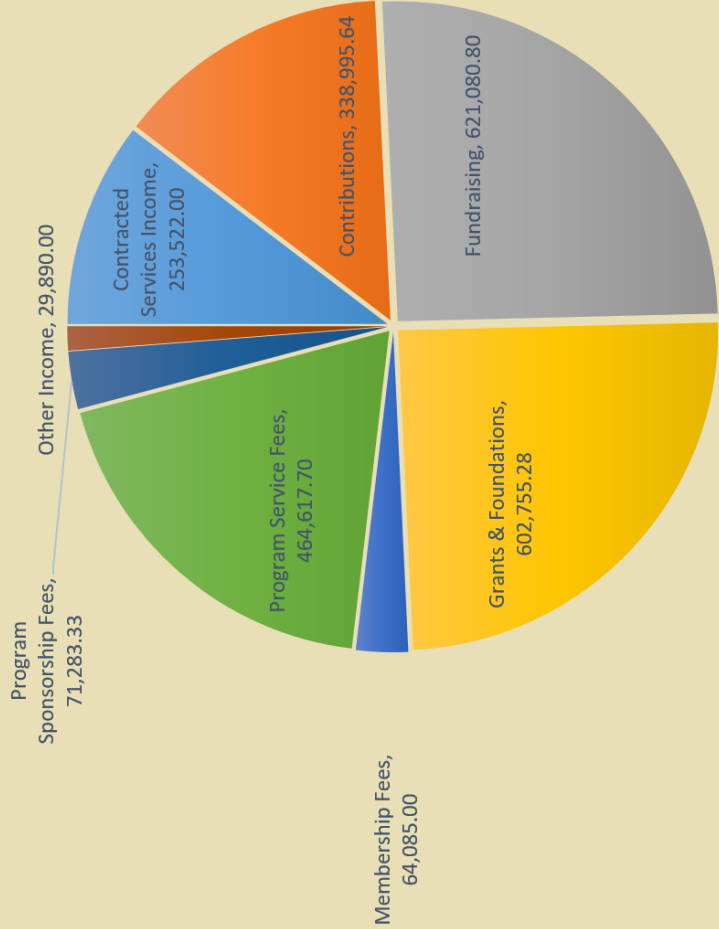
## 10 Years of Program and Organizational Progress



## Average Daily Participation



Annual Budgeted Income = \$2,446,230



Annual Budgeted Expenses = \$2,398,480

